



Drop Waist Ruffle Dress Tutorial and Free Pattern

Description







With warm summer weather withering away, at least in London, this dress comes into it's element as it is still summery, and yet made from our very durable medium weight Yarn Dyed 100% linen. This fabric feels very warm, and comforting and yet will keep you cool if the sun does decide to make an entrance.

Make a lovely dress full of charm with our Gathered Waist Ruffle Dress Pattern. It features a simple boxy design with a gathered skirt, button up back and the adorable ruffle detail at the waist adding a touch of femininity to this classic design.

Follow our detailed step-by-step tutorial to create a new and versatile addition to your wardrobe in as little as a few hours.

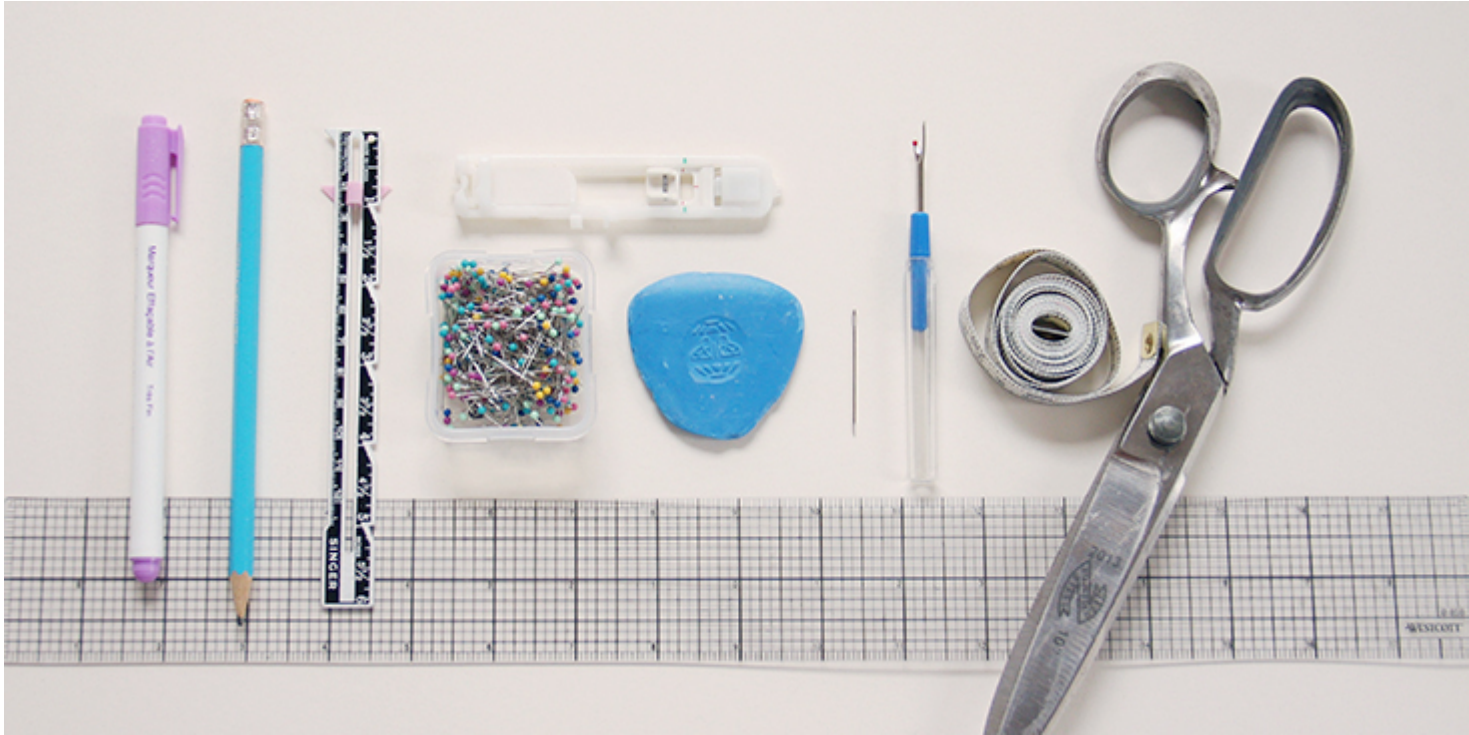
Materials



2 yards of [IL042 922 FS Premier Finish Medium Weight Linen](#)

Matching sewing thread, contrasting sewing thread for gathering, 5-6 medium sized buttons

Tools



Pattern paper, scissors, ruler, pins, chalk, pen, seam ripper, needle, buttonhole foot fabric marker, measuring tape, sewing machine

Difficulty

Intermediate

Time

4-5 hours

Pattern

You can access the dress pattern by following this link [HERE](#) and the printable pocket template can be found [HERE](#). Remember to add seam allowances as indicated in the pattern.

Note that you'll also need to make one continuous strip of bias band (1,5 wide) for the neckline. For detailed instructions on how to cut fabric on the bias please follow [this tutorial](#).

This dress is extremely loose and will fit quite a range of sizes – from XS to M. If you need help grading your pattern, please follow [this tutorial](#). Also, if you need help adjusting the pattern for a fuller bust, we have a great Full Bust Adjustment tutorial [HERE](#).

Steps

Note: Prewash your fabric and tumble dry it until it is still slightly moist, dry at room temperature. Iron the fabric so it is easier to work with.

1. Let's start with the button bands. First, fold the 3/8 (1 cm) seam allowance to the wrong side of your back panels and press. Then fold another 3/4 (2 cm) so that all raw edges are concealed inside the button band. Press and pin.

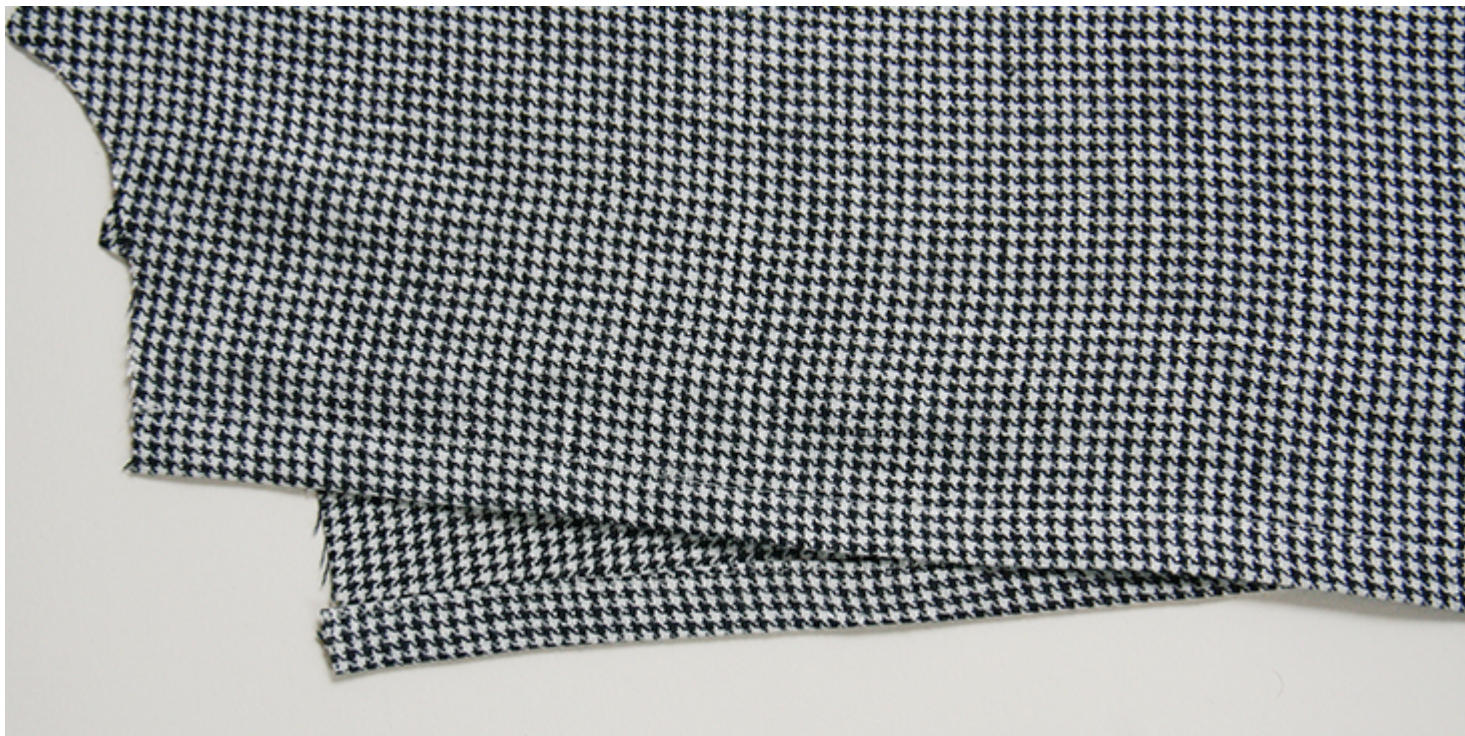


Note: When you fold/pin, make sure that your back pieces are mirror images of each other.



2. Stitch as close to the folded edge as possible (remember to backstitch).

Press the finished button bands to ensure the fabric sits flat.



Repeat with the other button band.

3. Sew the buttonholes as explained in this detailed tutorial [HERE](#).' Please note that in women's clothing the buttonholes are traditionally placed on the right, and the buttons – on the left. The number and the spacing are really up to you. If you want your buttons closer, just leave smaller gaps between them. We decided to space our buttonholes 2,5 (6 cm) apart. However, be mindful of the neckline and waistline seam allowances and place your buttonholes at least 1/2 away from the top and bottom edges.



4. Open the buttonholes with your seam ripper. Then overlap the button bands' and place a pin into the center of each buttonhole. This is where you'll need to attach the buttons. Here's a very easy [tutorial](#) on how to attach the buttons.

You can either do this now or at the very end – it's your choice!

5. Pin the front and the two back panels of your bodice right sides together at the shoulders.



6. Sew the shoulder seams right sides together at $\frac{3}{8}$ (1 cm) seam allowance, remember to backstitch. Trim the seam allowance down to $\frac{1}{4}$ (6 mm) and serge or zigzag the raw edges together to prevent the fabric from fraying. Press the seams flat folding the serged/zigzagged edges towards the back of your dress.



7. Bind the neckline following [this tutorial](#). Make sure that when you attach the binding the serged/zigzagged shoulder seam edge is folded towards the back of your dress.



When you come to the back opening, tuck in the ends of your bias band as shown below:



Here's what your finished neckline will look like:

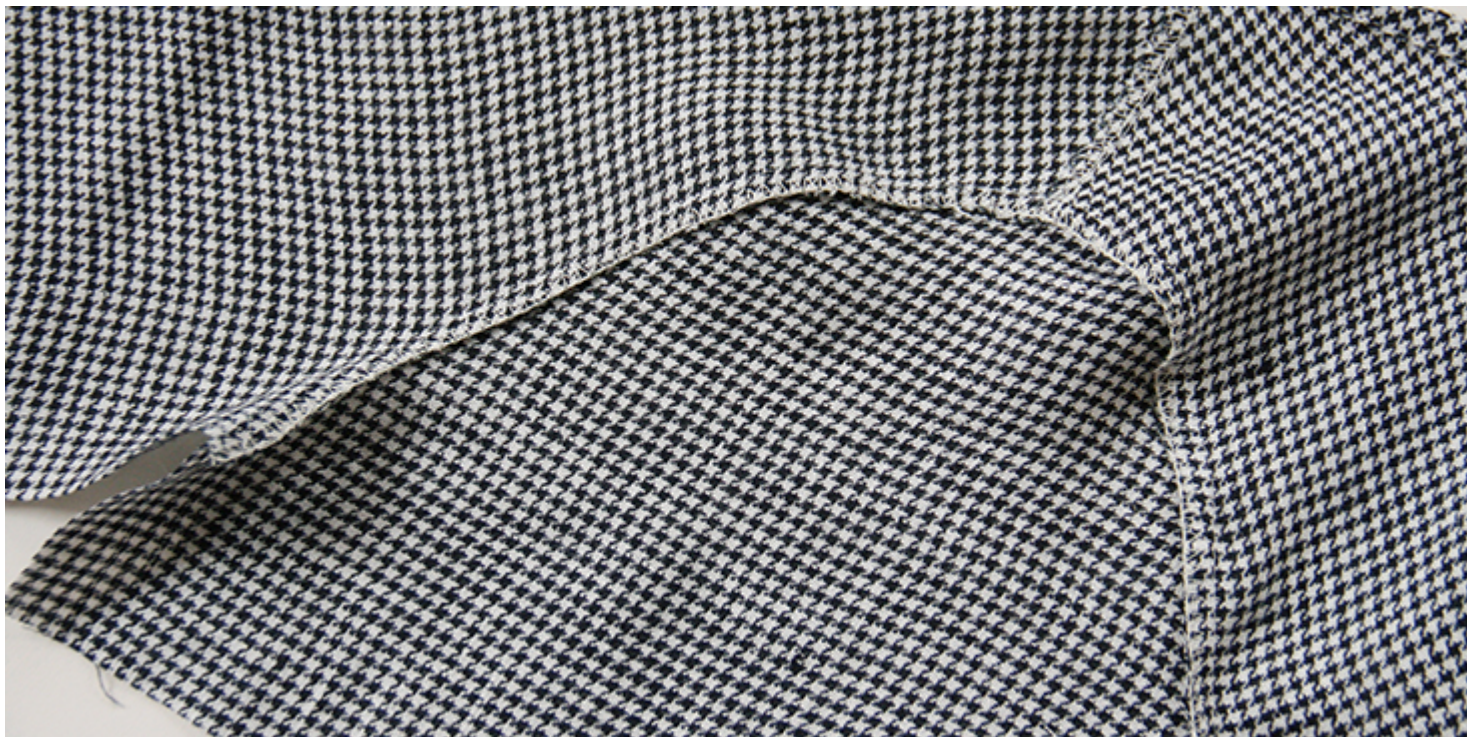


8. Time to attach the sleeves. Pin the sleeves to the armholes right sides together.



9. Sew at a 3/8" (1 cm) seam allowance. Serge or zigzag the raw edges

together to prevent the fabric from fraying. Press the serged/zigzagged seam allowances up towards the sleeves.



10. Pin the sleeve and bodice side seams right sides together.



11. Sew the pinned edges all in one seam at a $\frac{3}{8}$ " (1 cm) seam allowance. Finish the raw edges with a serger or a zigzag stitch and press the seams flat folding the serged/zigzagged edges towards the back of your dress.



12. Finish the sleeve openings with a simple rolled hem. Fold the raw edge first $\frac{3}{8}$ (1 cm) to the wrong side, then another $\frac{1}{2}$ (1.3 cm) and press. Pin the fold.



13. Working from the wrong side, topstitch as close to the inner fold as possible. Remember to backstitch and press the seams when you're done.

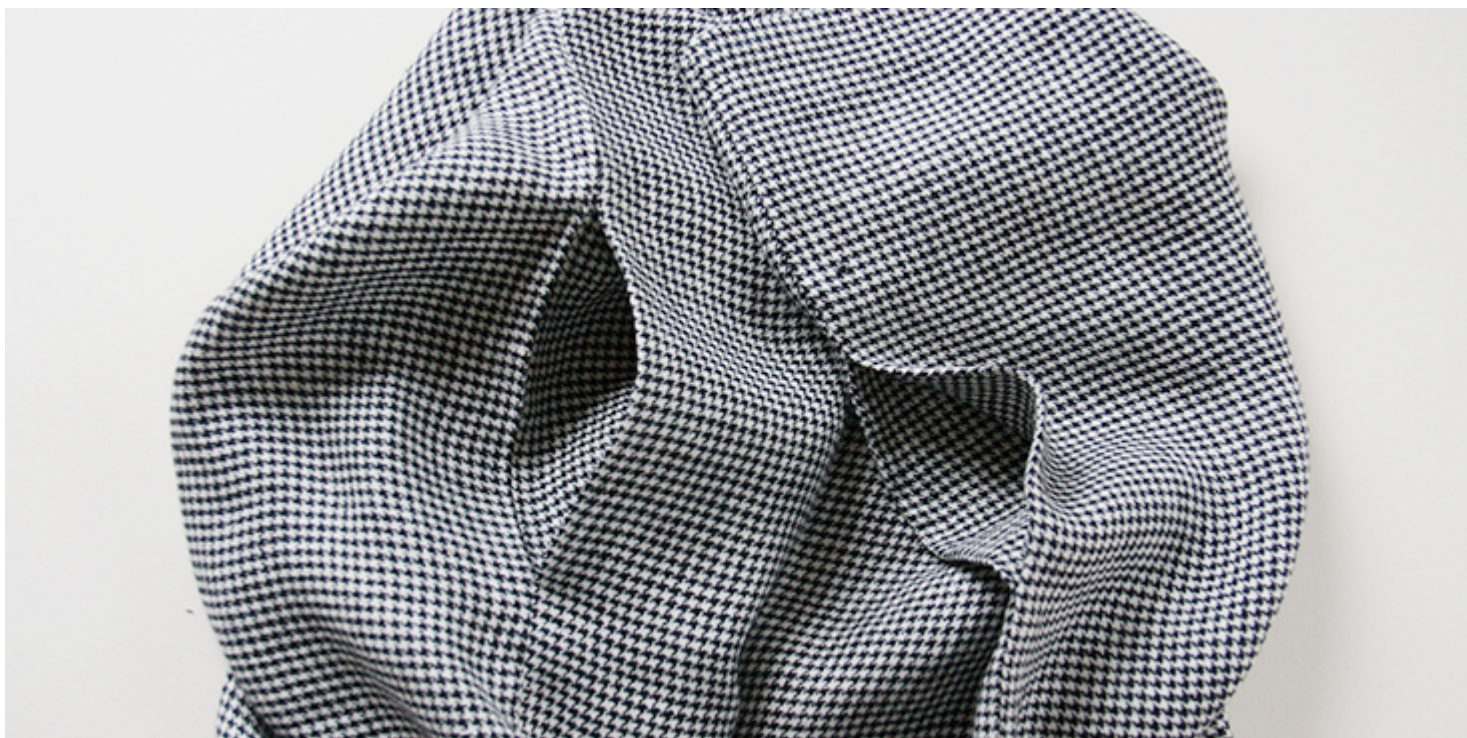


Put your assembled bodice aside and let's construct the skirt.

14. Following [THIS](#) tutorial, attach the inseam pockets and assemble the front and the back of the skirt together.

Place your pockets 5 away from the waistline.





15. Finish the bottom of your dress with a simple rolled hem. Fold the bottom edge under first $\frac{3}{8}$ (1 cm) then another 0,5 (1.3 cm) and press. Pin the fold.



16. Working from the wrong side, topstitch as close to the inner fold as

possible. Remember to backstitch and press the seams when you're done.



Now comes the tricky part: form a ruffle, gather and attach the skirt.

17. To create a 1-wide ruffle, fold your skirt's raw edge at waist 1.5 under to the wrong side and press. The $\frac{3}{8}$ is the seam allowance that we'll use to attach the skirt to the bodice and the $\frac{1}{8}$ is to account for the fabric lost in the fold.



18. To make sure that your future ruffle keeps its form after washing, run a line of topstitching $\frac{1}{8}$ from the folded edge.



19. Now accordion fold your fabric again (1.5 to the right side) so that your

new fold and the raw edge of your fabric are at the same level. Press and pin all three layers together.



As you can see, we've now created a double-folded strip of fabric that will become our ruffle after gathering.

Now it's time to gather the skirt and the ruffle (all in one).

20. Set your sewing machine on the longest stitch, use a contrast color thread and run two parallel lines of stitching all around the skirt opening and through three layers at once. Leave long thread tails that we will later use to gather the fabric. [HERE](#) is a step-by-step tutorial on how to prepare your fabric for gathering.



21. By pulling your threads, gather the skirt/ruffle to the measurement of your buttoned-up bodice. Space the gathers evenly.



22. Lastly, pin the gathered skirt to the bodice right sides together and

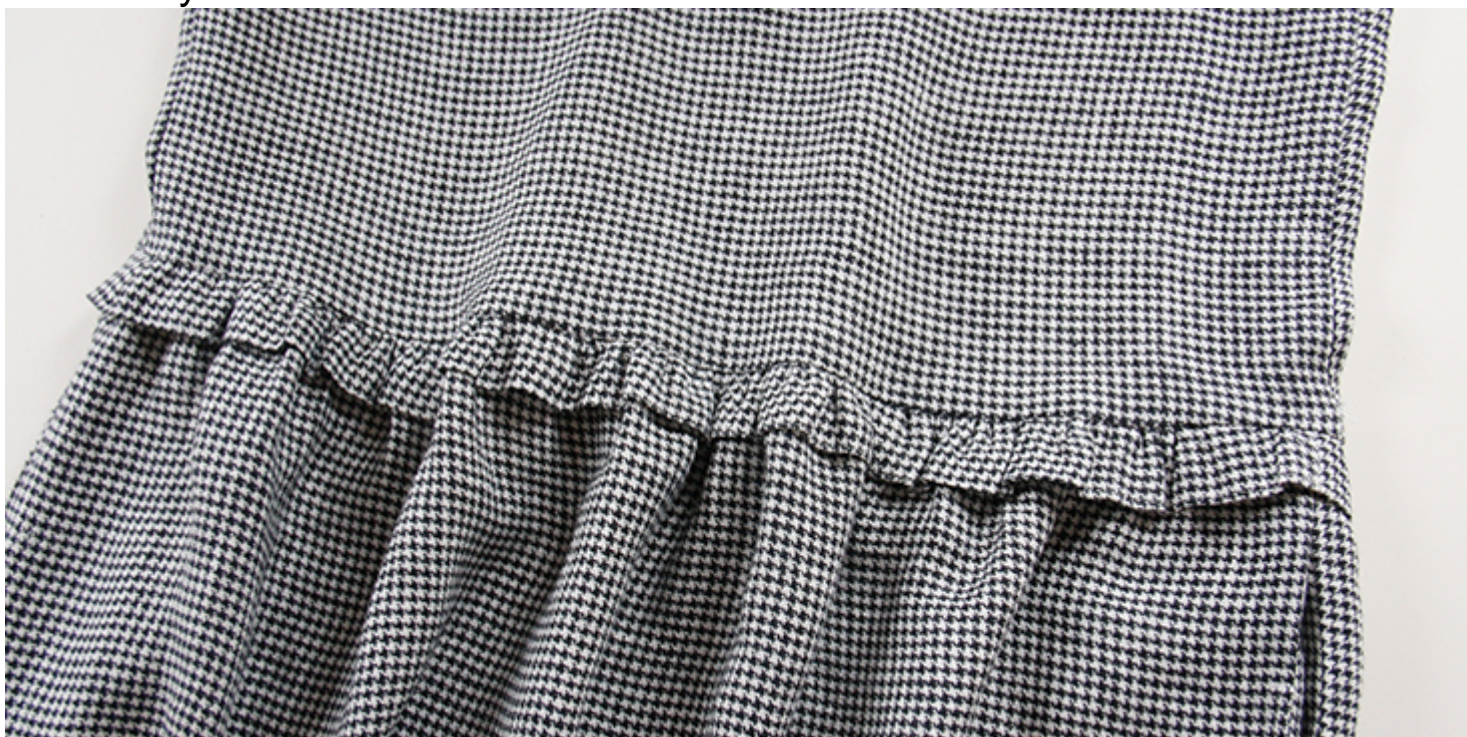
matching the side seams.



23. Sew at a 3/8" (1 cm) seam allowance. Remove the gather stitches using your seam ripper. This is why it's recommended to use a contrasting color thread – so that you don't make a mistake and rip out wrong stitches.



24. Trim the raw edge if necessary and serge or zigzag all three layers together. Press the seams flat folding the serged/zigzagged edges to one side and you are all done!



Why not have a look at the [plethora of fabric](#) we have to offer and' see which color takes your liking for this fabulous dress?

CATEGORY

1. FREE PATTERNS
2. TUTORIALS

Category

1. FREE PATTERNS
2. TUTORIALS

Date Created

September 19, 2017

Author

rima-khusainova